



32 HILLVIEW

Moneyreagh, BT23 6EZ

Offers around **£249,950**



DETACHED | 4  | 2  | 2 

Hillview is an exclusive development of high quality homes located off Church Road in the beautiful village of Moneyreagh offering excellent convenience to the established Moneyreagh Primary School, Popular Auld House Restaurant and local Churches. .

KEY FEATURES

- Well Presented Detached Property Located in Hillview Development, Moneyreagh
- Four Well Proportioned Bedrooms with Main Bedroom Benefitting of a Luxurious En-Suite Shower Room
- Bright and Spacious Living Room
- Downstairs WC
- Excellent Built in Under Stairs Storage
- Bespoke Fitted Kitchen Open to Family / Dining Area
- Separate Utility Room
- Family Bathroom with White Suite
- Fully Floored Roofspace with Excellent Insulation & Pull Down Ladder
- Fully Enclosed Rear Gardens Laid in Lawns and Part Patioed Ideal for Outdoor Entertaining
- Tarmacked Driveway Leading to Detached Garage
- Oil Fired Central Heating
- UPVC Double Glazing Throughout
- Early Viewing Highly Recommended
- Broadband Speed - Ultrafast



ROOM DETAILS

Ground Floor

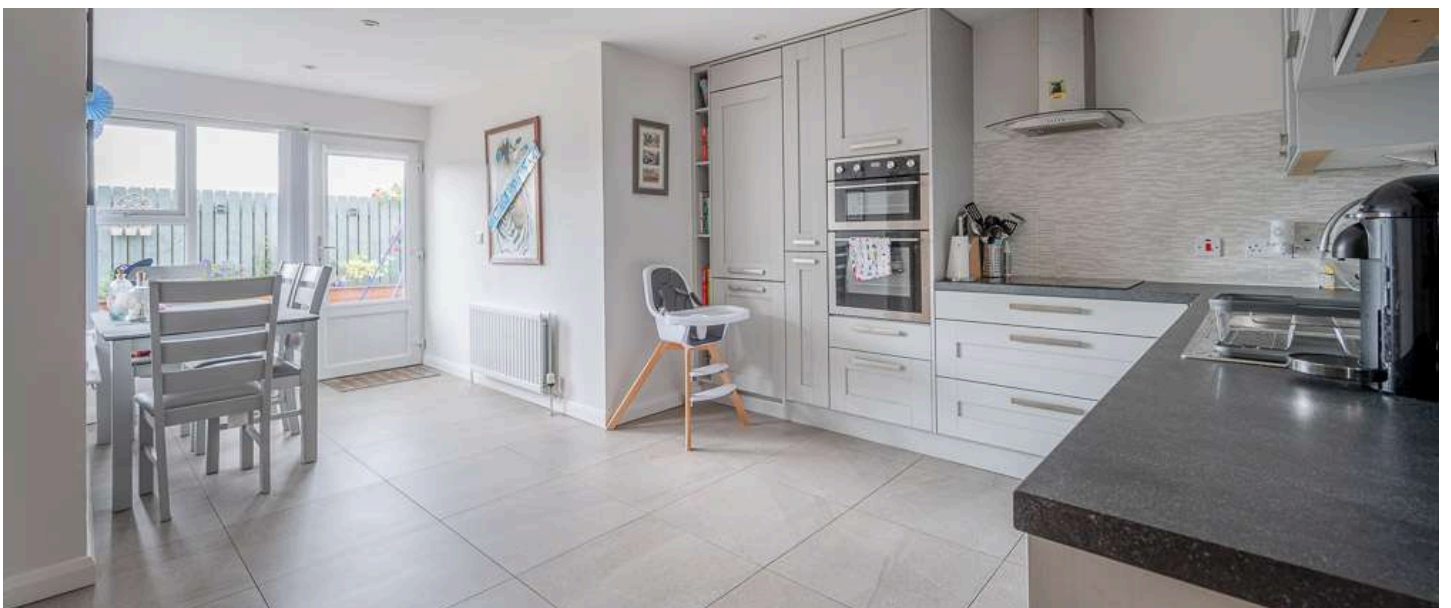
- Spacious Reception Hall
- Lounge
13'4" x 11'8"
- Kitchen/Family Area
13'4" x 19'8"
- Utility Room
- Downstairs WC

First Floor

- Landing
- Principle Bedroom
11'7" x 11'5"
- En-suite Shower Room
- Bedroom Two
10'10" x 8'1"
- Bedroom Three
9'5" x 7'6"
- Bedroom Four
8'7" x 5'10"
- Family Bathroom

Outside

- Detached Garage
- Gardens to front laid in lawns, brick paviour pathways to front door and side, tarmac driveway to other side with ample parking for numerous vehicles. Enclosed to rear with brick paviour patio areas, gardens laid in lawns, barked raised flowerbeds with mature shrubs, flowers and planting, outdoor power sockets, south westerly facing, oil storage tank to rear of garage, further practical storage to side of garage.



DIRECTIONS

Heading from Comber to Moneyreagh turn right at the end of Hillsborough Road onto Moneyreagh Road. From there take a left onto Church Road then a right onto Hillview. Number 32 is located on the right-hand side



THE LOCAL AREA

Moneyreagh or Moneyrea is a small village and townland in County Down, Northern Ireland. It is just off the main road between Belfast and Ballygowan. It is situated in the civil parish of Comber and the historic barony of Castlereagh Lower..

ENERGY EFFICIENCY RATING		
Very energy efficient – lower running costs		
	CURRENT	POTENTIAL
92+ A		
81-91 B	84	84
69-80 C		
55-68 D		
39-54 E		
21-38 F		
1-20 G		
NOT energy efficient – higher running costs		

Scan QR Code for more details and to arrange a viewing.



OUR BRANCHES

B' FAST (028) 9065 3333 H'WOOD (028) 9042 8888 BANGOR (028) 9131 3833 D'DEE (028) 9188 8881 COMBER (028) 9187 1212

property@johnminnis.co.uk

JOHNMINNIS.CO.UK     

